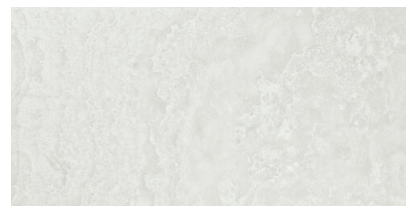


AGATE WHITE LAP RECT 60X120

REFERENCE	SIZE (cm)	THICKNESS (mm)	GROUP
A039541	60x120	9,40	PC BIA GL



DIMENSIONS AND SURFACE PROPERTIES

Size, thickness, side straightness, flatness, orthogonality UNE-EN 14411 It accomplished all requirements

PHYSICAL PROPERTIES

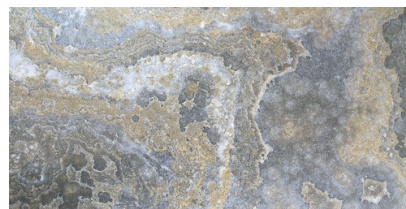
Water absorption capacity	EN ISO 10545-03	< 0,5%
Flexion resistance	EN ISO 10545-04	=> 35 N/mm ²
Abrasion resistance (glazed Ceramic)	EN ISO10545-07	IV
Thermal shock resistance	EN ISO 10545-09	It stands the test
Cracking resistance	EN ISO 10545-11	It stands the test
Frost resistance	EN ISO 10545-12	It stands the test

CHEMICAL PROPERTIES

Resistance to acids	EN ISO 10545-13	GHB
Resistance to alcalis	EN ISO 10545-13	GHB
Resistance to cleaning products	EN ISO 10545-13	GHB
Resistance to chemical products in swimming pool water	EN ISO 10545-13	GHB

AGATE BLUE LAP RECT 60X120

REFERENCE	SIZE (cm)	THICKNESS (mm)	GROUP
A039538	60x120	9,40	PC BIA GL



DIMENSIONS AND SURFACE PROPERTIES

Size, thickness, side straightness, flatness, orthogonality UNE-EN 14411 It accomplished all requirements

PHYSICAL PROPERTIES

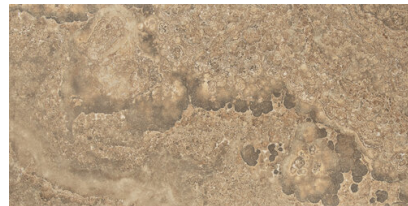
Water absorption capacity	EN ISO 10545-03	< 0,5%
Flexion resistance	EN ISO 10545-04	=> 35 N/mm ²
Abrasion resistance (glazed Ceramic)	EN ISO 10545-07	III
Thermal shock resistance	EN ISO 10545-09	It stands the test
Cracking resistance	EN ISO 10545-11	It stands the test
Frost resistance	EN ISO 10545-12	It stands the test

CHEMICAL PROPERTIES

Resistance to acids	EN ISO 10545-13	GHB
Resistance to alcalis	EN ISO 10545-13	GHB
Resistance to cleaning products	EN ISO 10545-13	GHB
Resistance to chemical products in swimming pool water	EN ISO 10545-13	GHB

AGATE SUNSET LAP RECT 60X120

REFERENCE	SIZE (cm)	THICKNESS (mm)	GROUP
A039540	60x120	9,90	PC BIA GL



DIMENSIONS AND SURFACE PROPERTIES

Size, thickness, side straightness, flatness, orthogonality UNE-EN 14411 It accomplished all requirements

PHYSICAL PROPERTIES

Water absorption capacity	EN ISO 10545-03	< 0,5%
Flexion resistance	EN ISO 10545-04	=> 35 N/mm ²
Abrasion resistance (glazed Ceramic)	EN ISO 10545-07	IV
Thermal shock resistance	EN ISO 10545-09	It stands the test
Cracking resistance	EN ISO 10545-11	It stands the test
Frost resistance	EN ISO 10545-12	It stands the test

CHEMICAL PROPERTIES

Resistance to acids	EN ISO 10545-13	GHB
Resistance to alcalis	EN ISO 10545-13	GHB
Resistance to cleaning products	EN ISO 10545-13	GHB
Resistance to chemical products in swimming pool water	EN ISO 10545-13	GHB

AGATE GREY LAP RECT 60X120

REFERENCE	SIZE (cm)	THICKNESS (mm)	GROUP
A039539	60x120	9,90	PC BIA GL



DIMENSIONS AND SURFACE PROPERTIES

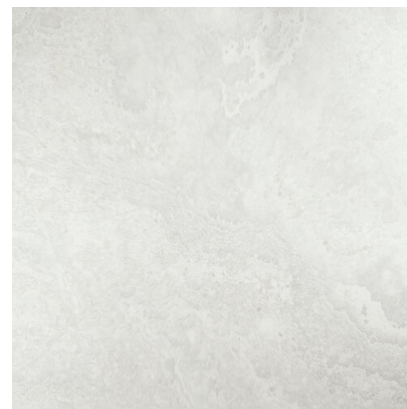
Size, thickness, side straightness, flatness, orthogonality UNE-EN 14411 It accomplished all requirements

PHYSICAL PROPERTIES

Water absorption capacity	EN ISO 10545-03	< 0,5%
Flexion resistance	EN ISO 10545-04	=> 35 N/mm ²
Abrasion resistance (glazed Ceramic)	EN ISO 10545-07	IV
Thermal shock resistance	EN ISO 10545-09	It stands the test
Cracking resistance	EN ISO 10545-11	It stands the test
Frost resistance	EN ISO 10545-12	It stands the test

CHEMICAL PROPERTIES

Resistance to acids	EN ISO 10545-13	GHB
Resistance to alcalis	EN ISO 10545-13	GHB
Resistance to cleaning products	EN ISO 10545-13	GHB
Resistance to chemical products in swimming pool water	EN ISO 10545-13	GHB



AGATE WHITE LAP RECT 90X90

REFERENCE	SIZE (cm)	THICKNESS (mm)	GROUP
A039545	90X90	9,80	PC BIA GL

DIMENSIONS AND SURFACE PROPERTIES

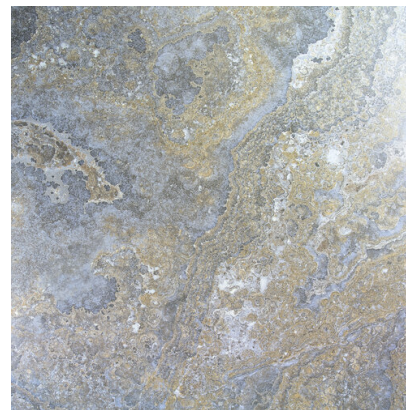
Size, thickness, side straightness, flatness, orthogonality	UNE-EN 14411	It accomplished all requirements
---	--------------	----------------------------------

PHYSICAL PROPERTIES

Water absorption capacity	EN ISO 10545-03	< 0,5%
Flexion resistance	EN ISO 10545-04	=> 35 N/mm ²
Abrasion resistance (glazed Ceramic)	EN ISO10545-07	IV
Thermal shock resistance	EN ISO 10545-09	It stands the test
Cracking resistance	EN ISO 10545-11	It stands the test
Frost resistance	EN ISO 10545-12	It stands the test

CHEMICAL PROPERTIES

Resistance to acids	EN ISO 10545-13	GHB
Resistance to alcalis	EN ISO 10545-13	GHB
Resistance to cleaning products	EN ISO 10545-13	GHB
Resistance to chemical products in swimming pool water	EN ISO 10545-13	GHB



AGATE BLUE LAP RECT 90X90

REFERENCE	SIZE (cm)	THICKNESS (mm)	GROUP
A039542	90X90	9,90	PC BIA GL

DIMENSIONS AND SURFACE PROPERTIES

Size, thickness, side straightness, flatness, orthogonality	UNE-EN 14411	It accomplished all requirements
---	--------------	----------------------------------

PHYSICAL PROPERTIES

Water absorption capacity	EN ISO 10545-03	< 0,5%
Flexion resistance	EN ISO 10545-04	=> 35 N/mm ²
Abrasion resistance (glazed Ceramic)	EN ISO 10545-07	III
Thermal shock resistance	EN ISO 10545-09	It stands the test
Cracking resistance	EN ISO 10545-11	It stands the test
Frost resistance	EN ISO 10545-12	It stands the test

CHEMICAL PROPERTIES

Resistance to acids	EN ISO 10545-13	GHB
Resistance to alkalis	EN ISO 10545-13	GHB
Resistance to cleaning products	EN ISO 10545-13	GHB
Resistance to chemical products in swimming pool water	EN ISO 10545-13	GHB



AGATE SUNSET LAP RECT 90X90

REFERENCE	SIZE (cm)	THICKNESS (mm)	GROUP
A039544	90X90	9,80	PC BIA GL

DIMENSIONS AND SURFACE PROPERTIES

Size, thickness, side straightness, flatness, orthogonality UNE-EN 14411 It accomplished all requirements

PHYSICAL PROPERTIES

Water absorption capacity	EN ISO 10545-03	< 0,5%
Flexion resistance	EN ISO 10545-04	=> 35 N/mm ²
Abrasion resistance (glazed Ceramic)	EN ISO 10545-07	IV
Thermal shock resistance	EN ISO 10545-09	It stands the test
Cracking resistance	EN ISO 10545-11	It stands the test
Frost resistance	EN ISO 10545-12	It stands the test

CHEMICAL PROPERTIES

Resistance to acids	EN ISO 10545-13	GHB
Resistance to alcalis	EN ISO 10545-13	GHB
Resistance to cleaning products	EN ISO 10545-13	GHB
Resistance to chemical products in swimming pool water	EN ISO 10545-13	GHB



AGATE GREY LAP RECT 90X90

REFERENCE	SIZE (cm)	THICKNESS (mm)	GROUP
A039543	90X90	9,90	PC BIA GL

DIMENSIONS AND SURFACE PROPERTIES

Size, thickness, side straightness, flatness, orthogonality UNE-EN 14411 It accomplished all requirements

PHYSICAL PROPERTIES

Water absorption capacity	EN ISO 10545-03	< 0,5%
Flexion resistance	EN ISO 10545-04	=> 35 N/mm ²
Abrasion resistance (glazed Ceramic)	EN ISO 10545-07	IV
Thermal shock resistance	EN ISO 10545-09	It stands the test
Cracking resistance	EN ISO 10545-11	It stands the test
Frost resistance	EN ISO 10545-12	It stands the test

CHEMICAL PROPERTIES

Resistance to acids	EN ISO 10545-13	GHB
Resistance to alcalis	EN ISO 10545-13	GHB
Resistance to cleaning products	EN ISO 10545-13	GHB
Resistance to chemical products in swimming pool water	EN ISO 10545-13	GHB



AGATE WHITE LAP RECT 9,7X9,7

REFERENCE	SIZE (cm)	THICKNESS (mm)	GROUP
A039826	9,7X9,7	9,90	PC BIA GL

DIMENSIONS AND SURFACE PROPERTIES

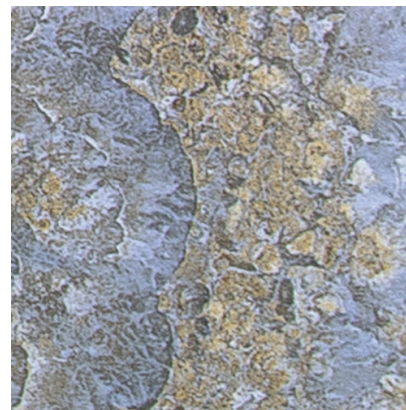
Size, thickness, side straightness, flatness, orthogonality UNE-EN 14411 It accomplished all requirements

PHYSICAL PROPERTIES

Water absorption capacity	EN ISO 10545-03	< 0,5%
Flexion resistance	EN ISO 10545-04	=> 35 N/mm ²
Abrasion resistance (glazed Ceramic)	EN ISO10545-07	IV
Thermal shock resistance	EN ISO 10545-09	It stands the test
Cracking resistance	EN ISO 10545-11	It stands the test
Frost resistance	EN ISO 10545-12	It stands the test

CHEMICAL PROPERTIES

Resistance to acids	EN ISO 10545-13	GHB
Resistance to alcalis	EN ISO 10545-13	GHB
Resistance to cleaning products	EN ISO 10545-13	GHB
Resistance to chemical products in swimming pool water	EN ISO 10545-13	GHB



AGATE BLUE LAP RECT 9,7X9,7

REFERENCE	SIZE (cm)	THICKNESS (mm)	GROUP
A039824	9,7X9,7	9,90	PC BIA GL

DIMENSIONS AND SURFACE PROPERTIES

Size, thickness, side straightness, flatness, orthogonality	UNE-EN 14411	It accomplished all requirements
---	--------------	----------------------------------

PHYSICAL PROPERTIES

Water absorption capacity	EN ISO 10545-03	< 0,5%
Flexion resistance	EN ISO 10545-04	=> 35 N/mm ²
Abrasion resistance (glazed Ceramic)	EN ISO 10545-07	IV
Thermal shock resistance	EN ISO 10545-09	It stands the test
Cracking resistance	EN ISO 10545-11	It stands the test
Frost resistance	EN ISO 10545-12	It stands the test

CHEMICAL PROPERTIES

Resistance to acids	EN ISO 10545-13	GHB
Resistance to alcalis	EN ISO 10545-13	GHB
Resistance to cleaning products	EN ISO 10545-13	GHB
Resistance to chemical products in swimming pool water	EN ISO 10545-13	GHB



AGATE SUNSET LAP RECT 9,7X9,7

REFERENCE	SIZE (cm)	THICKNESS (mm)	GROUP
A039827	9,7X9,7	9,90	PC BIA GL

DIMENSIONS AND SURFACE PROPERTIES

Size, thickness, side straightness, flatness, orthogonality UNE-EN 14411 It accomplished all requirements

PHYSICAL PROPERTIES

Water absorption capacity	EN ISO 10545-03	< 0,5%
Flexion resistance	EN ISO 10545-04	=> 35 N/mm ²
Abrasion resistance (glazed Ceramic)	EN ISO 10545-07	IV
Thermal shock resistance	EN ISO 10545-09	It stands the test
Cracking resistance	EN ISO 10545-11	It stands the test
Frost resistance	EN ISO 10545-12	It stands the test

CHEMICAL PROPERTIES

Resistance to acids	EN ISO 10545-13	GHB
Resistance to alcalis	EN ISO 10545-13	GHB
Resistance to cleaning products	EN ISO 10545-13	GHB
Resistance to chemical products in swimming pool water	EN ISO 10545-13	GHB



AGATE GREY LAP RECT 9,7X9,7

REFERENCE	SIZE (cm)	THICKNESS (mm)	GROUP
A039825	9,7X9,7	9,90	PC BIA GL

DIMENSIONS AND SURFACE PROPERTIES

Size, thickness, side straightness, flatness, orthogonality UNE-EN 14411 It accomplished all requirements

PHYSICAL PROPERTIES

Water absorption capacity	EN ISO 10545-03	< 0,5%
Flexion resistance	EN ISO 10545-04	=> 35 N/mm ²
Abrasion resistance (glazed Ceramic)	EN ISO 10545-07	IV
Thermal shock resistance	EN ISO 10545-09	It stands the test
Cracking resistance	EN ISO 10545-11	It stands the test
Frost resistance	EN ISO 10545-12	It stands the test

CHEMICAL PROPERTIES

Resistance to acids	EN ISO 10545-13	GHB
Resistance to alcalis	EN ISO 10545-13	GHB
Resistance to cleaning products	EN ISO 10545-13	GHB
Resistance to chemical products in swimming pool water	EN ISO 10545-13	GHB

AGATE WHITE LAP RECT 9,7X90

REFERENCE	SIZE (cm)	THICKNESS (mm)	GROUP
A039822	9,7x90	9,70	PC BIA GL



DIMENSIONS AND SURFACE PROPERTIES

Size, thickness, side straightness, flatness, orthogonality UNE-EN 14411 It accomplished all requirements

PHYSICAL PROPERTIES

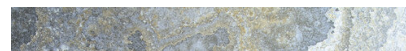
Water absorption capacity	EN ISO 10545-03	< 0,5%
Flexion resistance	EN ISO 10545-04	=> 35 N/mm ²
Abrasion resistance (glazed Ceramic)	EN ISO10545-07	IV
Thermal shock resistance	EN ISO 10545-09	It stands the test
Cracking resistance	EN ISO 10545-11	It stands the test
Frost resistance	EN ISO 10545-12	It stands the test

CHEMICAL PROPERTIES

Resistance to acids	EN ISO 10545-13	GHB
Resistance to alcalis	EN ISO 10545-13	GHB
Resistance to cleaning products	EN ISO 10545-13	GHB
Resistance to chemical products in swimming pool water	EN ISO 10545-13	GHB

AGATE BLUE LAP RECT 9,7X90

REFERENCE	SIZE (cm)	THICKNESS (mm)	GROUP
A039820	9,7x90	9,70	PC BIA GL



DIMENSIONS AND SURFACE PROPERTIES

Size, thickness, side straightness, flatness, orthogonality UNE-EN 14411 It accomplished all requirements

PHYSICAL PROPERTIES

Water absorption capacity	EN ISO 10545-03	< 0,5%
Flexion resistance	EN ISO 10545-04	=> 35 N/mm ²
Abrasion resistance (glazed Ceramic)	EN ISO 10545-07	IV
Thermal shock resistance	EN ISO 10545-09	It stands the test
Cracking resistance	EN ISO 10545-11	It stands the test
Frost resistance	EN ISO 10545-12	It stands the test

CHEMICAL PROPERTIES

Resistance to acids	EN ISO 10545-13	GHB
Resistance to alkalis	EN ISO 10545-13	GHB
Resistance to cleaning products	EN ISO 10545-13	GHB
Resistance to chemical products in swimming pool water	EN ISO 10545-13	GHB

AGATE SUNSET LAP RECT 9,7X90

REFERENCE	SIZE (cm)	THICKNESS (mm)	GROUP
A039823	9,7x90	9,70	PC BIA GL



DIMENSIONS AND SURFACE PROPERTIES

Size, thickness, side straightness, flatness, orthogonality UNE-EN 14411 It accomplished all requirements

PHYSICAL PROPERTIES

Water absorption capacity	EN ISO 10545-03	< 0,5%
Flexion resistance	EN ISO 10545-04	=> 35 N/mm ²
Abrasion resistance (glazed Ceramic)	EN ISO 10545-07	IV
Thermal shock resistance	EN ISO 10545-09	It stands the test
Cracking resistance	EN ISO 10545-11	It stands the test
Frost resistance	EN ISO 10545-12	It stands the test

CHEMICAL PROPERTIES

Resistance to acids	EN ISO 10545-13	GHB
Resistance to alkalis	EN ISO 10545-13	GHB
Resistance to cleaning products	EN ISO 10545-13	GHB
Resistance to chemical products in swimming pool water	EN ISO 10545-13	GHB

AGATE GREY LAP RECT 9,7X90

REFERENCE	SIZE (cm)	THICKNESS (mm)	GROUP
A039821	9,7x90	9,70	PC BIA GL



DIMENSIONS AND SURFACE PROPERTIES

Size, thickness, side straightness, flatness, orthogonality UNE-EN 14411 It accomplished all requirements

PHYSICAL PROPERTIES

Water absorption capacity	EN ISO 10545-03	< 0,5%
Flexion resistance	EN ISO 10545-04	=> 35 N/mm ²
Abrasion resistance (glazed Ceramic)	EN ISO10545-07	IV
Thermal shock resistance	EN ISO 10545-09	It stands the test
Cracking resistance	EN ISO 10545-11	It stands the test
Frost resistance	EN ISO 10545-12	It stands the test

CHEMICAL PROPERTIES

Resistance to acids	EN ISO 10545-13	GHB
Resistance to alkalis	EN ISO 10545-13	GHB
Resistance to cleaning products	EN ISO 10545-13	GHB
Resistance to chemical products in swimming pool water	EN ISO 10545-13	GHB

APE

best for you



DECOR SET(2) AGATE WHITE 60X120

REFERENCE	SIZE (cm)	THICKNESS (mm)	GROUP
A039814	60x120	9,80	PC BIA GL

DIMENSIONS AND SURFACE PROPERTIES

PHYSICAL PROPERTIES

Frost resistance

EN ISO 10545-12

It stands the test

CHEMICAL PROPERTIES

APE

best for you

DECOR SET(2) AGATE BLUE 60X120

REFERENCE	SIZE (cm)	THICKNESS (mm)	GROUP
A039812	60x120	9,80	PC BIA GL



DIMENSIONS AND SURFACE PROPERTIES

PHYSICAL PROPERTIES

Frost resistance

EN ISO 10545-12

It stands the test

CHEMICAL PROPERTIES

DECOR SET(2) AGATE SUNSET

60X120

REFERENCE	SIZE (cm)	THICKNESS (mm)	GROUP
A039815	60x120	9,80	PC BIA GL



DIMENSIONS AND SURFACE PROPERTIES

PHYSICAL PROPERTIES

Frost resistance	EN ISO 10545-12	It stands the test
------------------	-----------------	--------------------

CHEMICAL PROPERTIES

APE

best for you

DECOR SET(2) AGATE GREY 60X120

REFERENCE	SIZE (cm)	THICKNESS (mm)	GROUP
A039813	60x120	9,80	PC BIA GL



DIMENSIONS AND SURFACE PROPERTIES

PHYSICAL PROPERTIES

Frost resistance

EN ISO 10545-12

It stands the test

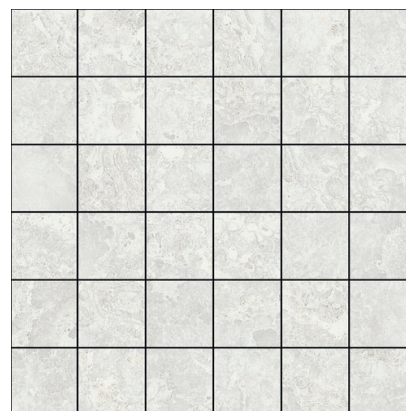
CHEMICAL PROPERTIES

APE

best for you

MALLA AGATE WHITE LAP 30X30 (5X5)

REFERENCE	SIZE (cm)	THICKNESS (mm)	GROUP
A039830	30X30	0,00	PC BIA GL



DIMENSIONS AND SURFACE PROPERTIES

PHYSICAL PROPERTIES

Frost resistance

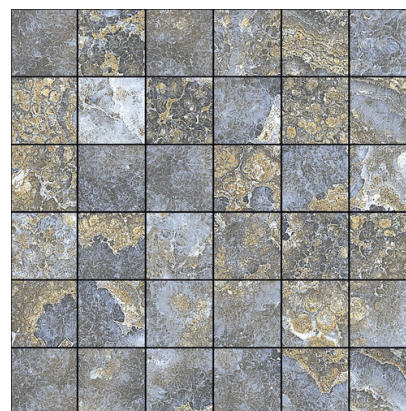
EN ISO 10545-12

It stands the test

CHEMICAL PROPERTIES

MALLA AGATE BLUE LAP 30X30 (5X5)

REFERENCE	SIZE (cm)	THICKNESS (mm)	GROUP
A039828	30X30	9,70	PC BIA GL



DIMENSIONS AND SURFACE PROPERTIES

PHYSICAL PROPERTIES

Frost resistance	EN ISO 10545-12	It stands the test
------------------	-----------------	--------------------

CHEMICAL PROPERTIES

APE

best for you

MALLA AGATE SUNSET LAP 30X30 (5X5)

REFERENCE	SIZE (cm)	THICKNESS (mm)	GROUP
A039831	30X30	0,00	PC BIA GL



DIMENSIONS AND SURFACE PROPERTIES

PHYSICAL PROPERTIES

Frost resistance	EN ISO 10545-12	It stands the test
------------------	-----------------	--------------------

CHEMICAL PROPERTIES

MALLA AGATE GREY LAP 30X30 (5X5)

REFERENCE	SIZE (cm)	THICKNESS (mm)	GROUP
A039829	30X30	0,00	PC BIA GL



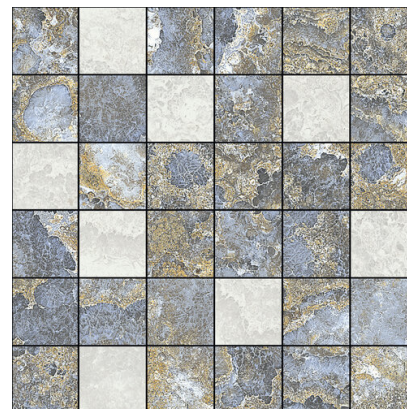
DIMENSIONS AND SURFACE PROPERTIES

PHYSICAL PROPERTIES

Frost resistance EN ISO 10545-12 It stands the test

CHEMICAL PROPERTIES

MALLA AGATE MIX BLUE LAP 30X30 (5X5)



REFERENCE	SIZE (cm)	THICKNESS (mm)	GROUP
A039832	30X30	0,00	PC BIA GL

DIMENSIONS AND SURFACE PROPERTIES

PHYSICAL PROPERTIES

Frost resistance EN ISO 10545-12 It stands the test

CHEMICAL PROPERTIES

APE

best for you

MALLA AGATE MIX SUNSET LAP

30X30 (5X5)

REFERENCE	SIZE (cm)	THICKNESS (mm)	GROUP
A039834	30X30	0,00	PC BIA GL



DIMENSIONS AND SURFACE PROPERTIES

PHYSICAL PROPERTIES

Frost resistance

EN ISO 10545-12

It stands the test

CHEMICAL PROPERTIES

MALLA AGATE MIX GREY LAP 30X30 (5X5)

REFERENCE	SIZE (cm)	THICKNESS (mm)	GROUP
A039833	30X30	0,00	PC BIA GL



DIMENSIONS AND SURFACE PROPERTIES

PHYSICAL PROPERTIES

Frost resistance	EN ISO 10545-12	It stands the test
------------------	-----------------	--------------------

CHEMICAL PROPERTIES